

\$749,999 - 1010 Downey Way, Edmonton

MLS® #E4427310

\$749,999

5 Bedroom, 2.50 Bathroom, 2,955 sqft

Single Family on 0.00 Acres

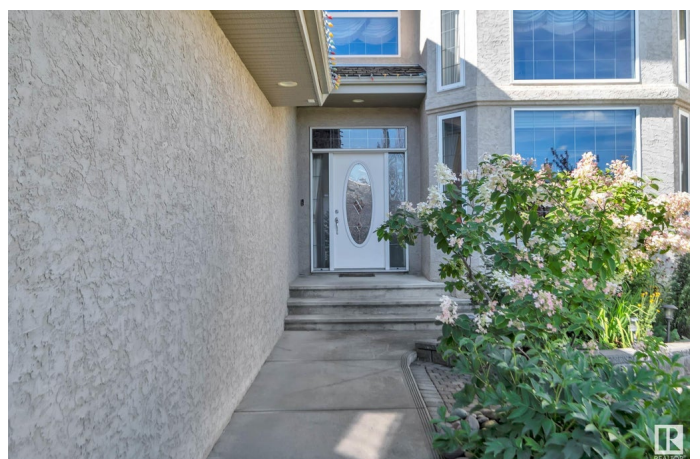
Donsdale, Edmonton, AB

Welcome to this spacious 4 bedroom, 2.5 bathroom home in the desirable community of Donsdale. With 2955 square feet of living space it offers a functional layout perfect for family living. The main floor features a bright family room, a well-appointed kitchen, formal living and dining areas, plus a flex room ideal for an office, playroom, or library. Upstairs, the primary suite includes a walk-in closet and ensuite, while three additional bedrooms provide plenty of space. The west-facing backyard is beautifully landscaped with a cozy patio, perfect for relaxing or entertaining. This home also includes central A/C, an oversized double-attached garage, and sits on a large 53x119 lot. Located in a quiet, family-friendly neighborhood with easy access to river valley trails, top-rated schools, and all amenities.

Built in 2002

Essential Information

MLS® #	E4427310
Price	\$749,999
Bedrooms	5
Bathrooms	2.50
Full Baths	2
Half Baths	1
Square Footage	2,955
Acres	0.00



Year Built	2002
Type	Single Family
Sub-Type	Detached Single Family
Style	2 Storey
Status	Active

Community Information

Address	1010 Downey Way
Area	Edmonton
Subdivision	Donsdale
City	Edmonton
County	ALBERTA
Province	AB
Postal Code	T6M 2V4

Amenities

Amenities	Air Conditioner, No Animal Home, No Smoking Home, Secured Parking
Parking	Double Garage Attached, Over Sized

Interior

Interior Features	ensuite bathroom
Appliances	Air Conditioning-Central, Dishwasher-Built-In, Dryer, Garage Control, Garage Opener, Hood Fan, Stove-Electric, Washer, Refrigerators-Two
Heating	Forced Air-2, Natural Gas
Fireplace	Yes
Fireplaces	Mantel
Stories	2
Has Basement	Yes
Basement	Full, Unfinished

Exterior

Exterior	Wood, Stone, Stucco
Exterior Features	Fenced, Flat Site, Golf Nearby, No Back Lane, Playground Nearby, Public Transportation, Schools, Shopping Nearby
Roof	Asphalt Shingles
Construction	Wood, Stone, Stucco
Foundation	Concrete Perimeter

Additional Information

Date Listed March 25th, 2025

Days on Market 6

Zoning Zone 20

DATA IS DEEMED RELIABLE BUT IS NOT GUARANTEED ACCURATE BY THE REALTORS® ASSOCIATION OF EDMONTON. COPYRIGHT 2025 BY THE REALTORS® ASSOCIATION OF EDMONTON. ALL RIGHTS RESERVED. Trademarks are owned or controlled by the Canadian Real Estate Association (CREA) and identify real estate professionals who are members of CREA (REALTOR®, REALTORS®) and/or the quality of services they provide (MLS®, Multiple Listing Service®)

Listing information last updated on March 31st, 2025 at 9:47am MDT