

\$779,900 - 330 Canter Wynd, Sherwood Park

MLS® #E4416148

\$779,900

3 Bedroom, 2.50 Bathroom, 2,468 sqft
Single Family on 0.00 Acres

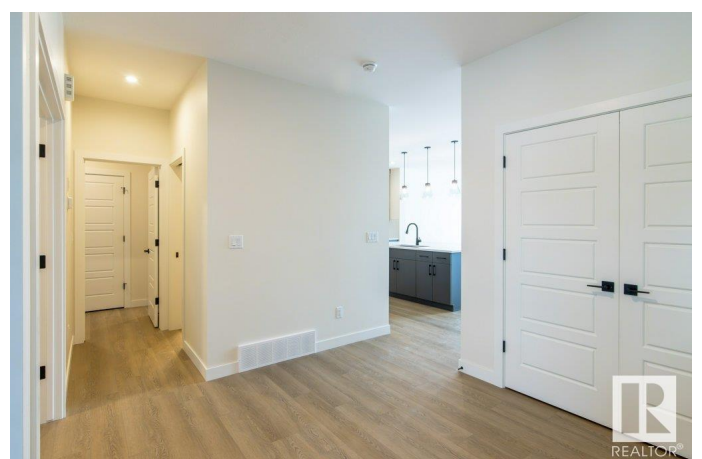
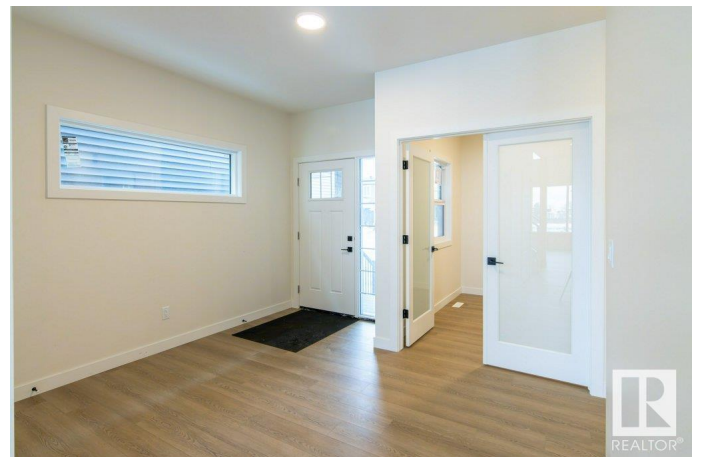
Cambrian, Sherwood Park, AB

EXECUTIVE 2 STOREY WALKOUT! Built by San Rufo Homes, the Joseph III model offers over 2300 sq.ft. of luxurious living space. Backing onto a pond – the location is unbeatable! Featuring 3 bedrooms & 2.5 baths, the superior craftsmanship & attention to detail is evident as soon as you step inside. Beautifully upgraded with quartz counters, designer lighting, high end flooring and quality cabinetry throughout. The chef’s kitchen is a dream with a large walk-thru pantry, fully fitted mudroom & dining area with patio doors leading onto the deck. The bright, open to below, great room has huge windows flooding the home with natural light & is anchored by a sleek linear fireplace. The upper level has a spacious bonus room, laundry & 3 bedrooms, the primary with a 5 pce ensuite, drop in tub & separate glass shower. The WALK-OUT basement with SEPARATE SIDE ENTRANCE offers lots more potential opportunities & living space. Surrounded by natural beauty, scenic walking trails & park space – modern living at its finest!

Built in 2024

Essential Information

MLS® #	E4416148
Price	\$779,900



Bedrooms	3
Bathrooms	2.50
Full Baths	2
Half Baths	1
Square Footage	2,468
Acres	0.00
Year Built	2024
Type	Single Family
Sub-Type	Detached Single Family
Style	2 Storey
Status	Active

Community Information

Address	330 Canter Wynd
Area	Sherwood Park
Subdivision	Cambrian
City	Sherwood Park
County	ALBERTA
Province	AB
Postal Code	T8H 2Z7

Amenities

Amenities	Deck, Detectors Smoke, Walkout Basement, See Remarks
Parking Spaces	4
Parking	Double Garage Attached
Is Waterfront	Yes

Interior

Interior Features	ensuite bathroom
Appliances	None
Heating	Forced Air-1, Natural Gas
Fireplace	Yes
Fireplaces	Insert
Stories	2
Has Basement	Yes
Basement	Full, Unfinished

Exterior

Exterior	Wood, Stone, Vinyl
----------	--------------------

Exterior Features	Creek, Landscaped, Park/Reserve, Playground Nearby, Schools, Shopping Nearby
Roof	Asphalt Shingles
Construction	Wood, Stone, Vinyl
Foundation	Concrete Perimeter

Additional Information

Date Listed	December 13th, 2024
Days on Market	91
Zoning	Zone 25

DATA IS DEEMED RELIABLE BUT IS NOT GUARANTEED ACCURATE BY THE REALTORS® ASSOCIATION OF EDMONTON. COPYRIGHT 2025 BY THE REALTORS® ASSOCIATION OF EDMONTON. ALL RIGHTS RESERVED. Trademarks are owned or controlled by the Canadian Real Estate Association (CREA) and identify real estate professionals who are members of CREA (REALTOR®, REALTORS®) and/or the quality of services they provide (MLS®, Multiple Listing Service®)

Listing information last updated on March 14th, 2025 at 12:02am MDT